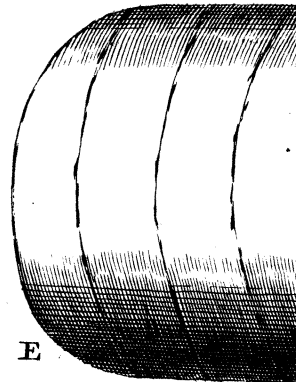
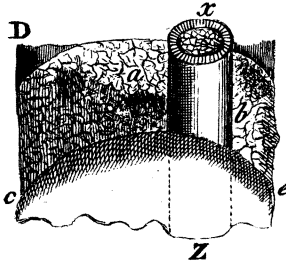
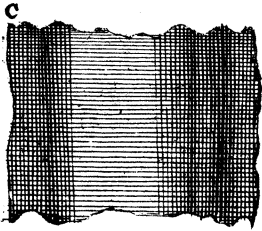
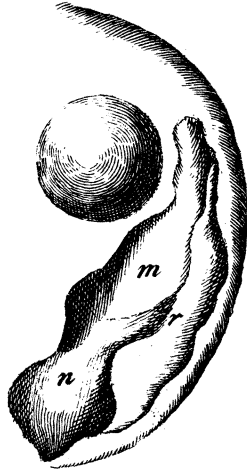
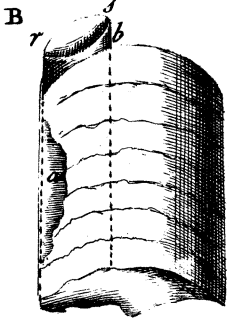
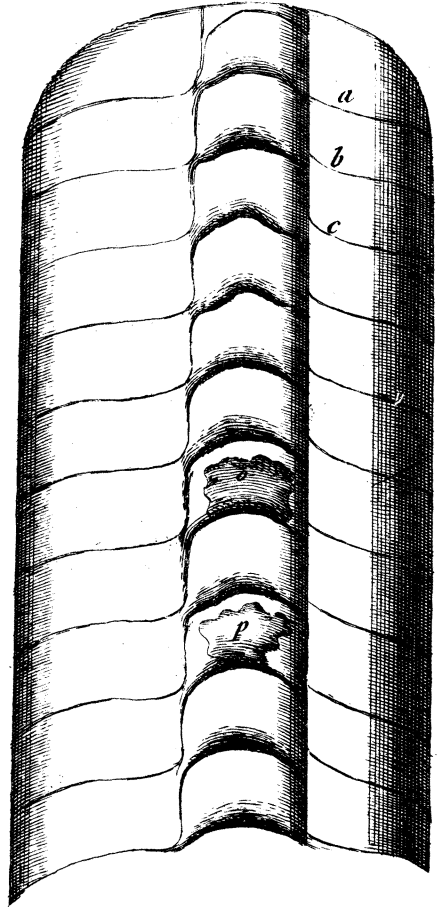
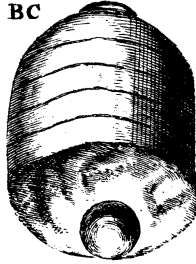
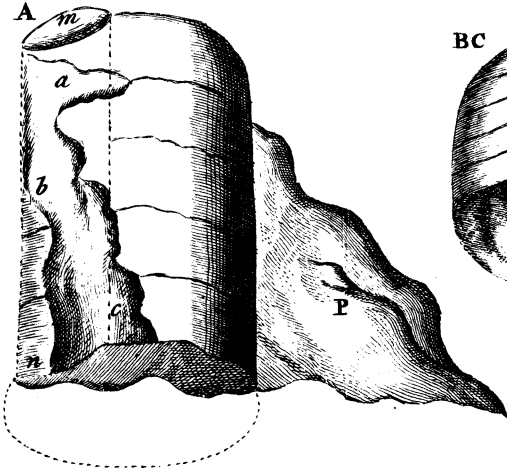


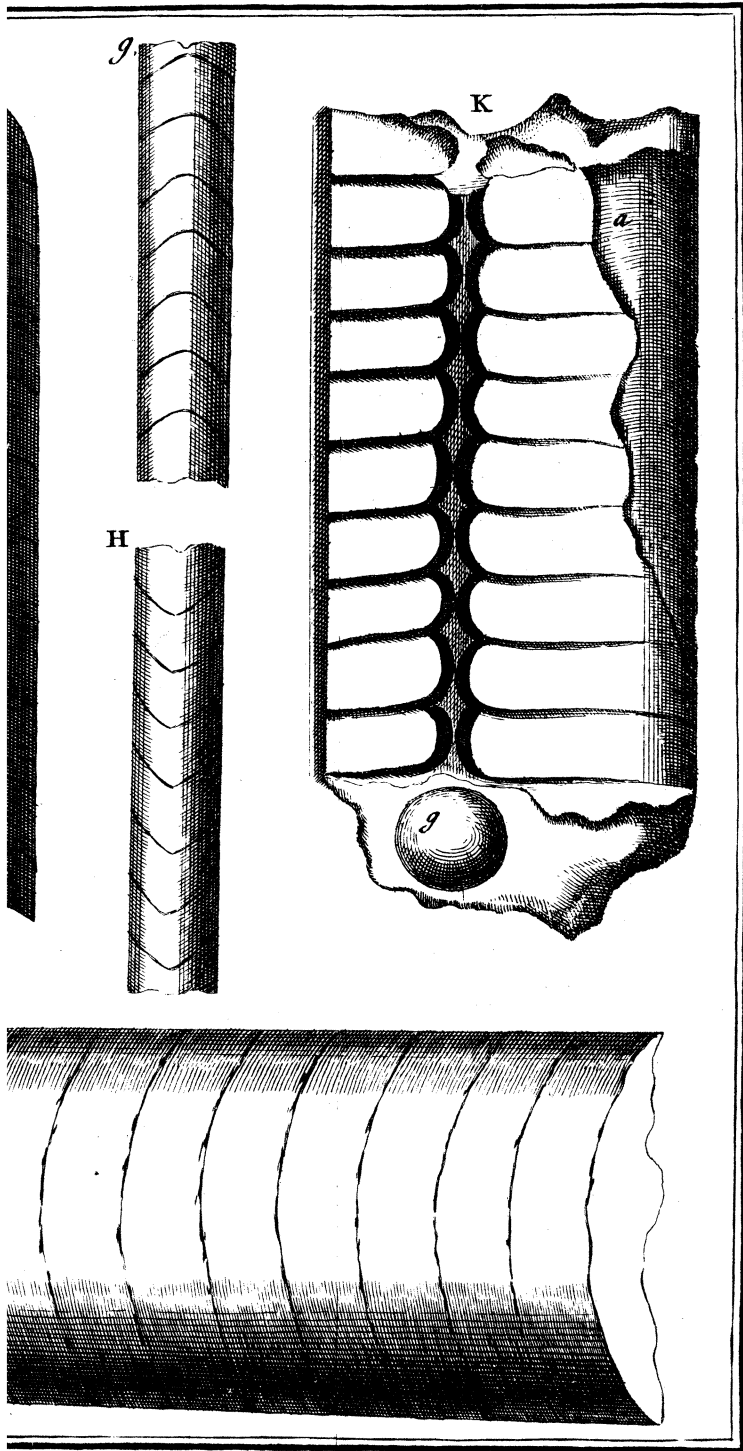
XCIII. *De rariori quadam Orthoceratitidis Specie, in Suecia reperta, tractatus: in literis a Nicholao de Himsel, M. D. Riga Livono, ad Gul. Watfon, M. D. R. S. S.*

Read May 11, 1758. **O**Rthoceratitidis recti in loco quodam Kelwika dicto, prope Fahlunam in Dahlia, reperti. Inhærebant lapidi cineracei coloris calcareo, variæ magnitudinis orthoceratitidis, quorum portiones hic delineatas describo.

Vide TAB. XXIII.

Fig. A. Orthoceratitidis portio, cujus pars inferior saxo adhuc adhæret; ex lapide calcareo constans lente in apicem decrefcens. Licet ex parvis ejus fragmentis judicari poffit, cylindrum effe orthoceratitem, ea tamen fi conjunguntur, verum formant conum, et mihi videtur ex crassitie fiphonis, orthoceratitem hunc conicum duos fere superaviffè pedes. Vidi orthoceratitem in alio lapide calcareo, quem etiam ibidem loci, Kelwikæ, reperi, longitudine duorum cum femiffè pedum: sed impossibile erat, integrum eum excutere, nimis enim fragile erat. Est portio hæc orthoceratitidis testa fua ambiente veftita in *abc*. Quinque confpiciuntur articuli, thalami quondam, arctiffime fibi invicem infidentes, per quos a latere procedit fipho *mn* fat craffus, qui in omnibus fere, quas poffideo portionibus orthoceratitarum,





rum, a centro semper remotus, hic ad peripheriam positus conspicitur. Siphonem admodum lente decrefcit, ex quo etiam de longitudine conijci licet. Crustæ vel testæ *abc* interior pars, quæ articulos tegit, crystallina est, ex spatii crystallis tenuioribus irregularibus constans.

Fig. B. Portio alia, in qua articuli minus crassi; siphonem quoque ad peripheriam positus, testa sua in *a* tecta. Conspicitur septum illud testaceum in *b*, communi tenuior, quod ab ipso articulo superiori procedens, siphonis partem *rs* investit.

Fig. B, C. Portio orthoceratitis ex lapide calcareo cineracei coloris: siphonem vero, fluore spatioso egregie crystallifato, constat.

Fig. C. Portio alia per axin divisa, cujus pars exterior, testa quæ striis circularibus levioribus externe ornata, investita conspicitur.

Ex parte interiori *Fig. D.* confirmatio ejus interna adparet. Siphonem *xx* gracilior, inter centrum et peripheriam positus, dimidia parte ambiente articulo denudatus adparet; dimidia altera, inferiori articulo *cde* tegitur. Articulus *ab* spatio crystallifato pellucido polygono repletus est. Articulus *cde* vero, saxo spatioso incarnato paululum repletus est. *x*. Siphonis pars superior, ubi radii a peripheria ad centrum tendentes conspiciuntur. Inter crystallos spatiosos in articulo *ab* striæ hinc et inde adparent nigræ, asphalto repletæ; ita etiam cavitas articuli *ab*, æque ac superficies convexa articuli *ce*, quæ in primam concavam recipitur, lamina asphalti vestitæ sunt.

- Fig. E.* Pars alia orthoceratitis majoris, et quidem facies exterior.
- Fig. F.* Facies ejus interior, in medio divisi, cum siphone transeunte satis crasso. *abc* et reliquæ striæ leves, sunt diaphragmata, articulos *a b* invicem separantia, siphonem proprie constituentia, siphonisque tenuiorem membranam, quæ in *o* et *p* adhuc conspicitur, ambientia. Sunt diaphragmata hæc crassiora in siphonis vestigiis, et sibi invicem ab inferiori parte insident. Siphonem hic inter centrum et peripheriam positus est.
- Fig. G.* Materies calcarea, quæ siphonem replevit striata, et quidem pars ejus interior, qua centrum orthoceratitis respicit, peripheriæ opposita.
- Fig. H.* Facies posterior, peripheriæ propior.
- Fig. I.* Pars concava articuli majoris orthoceratitis, in qua diaphragmatis testacei jam crystallisati portiunculæ albicantes *mnr* conspiciuntur cum siphone transeunte.
- Fig. K.* Portio alia orthoceratitis majoris, ejusque facies exterior, cum siphone *g* ad peripheriamposito. Conspiciuntur hic diaphragmata, quæ ab utroque latere, ab articulis procedunt, se invicem conjungunt, et siphonem ab exteriori parte obtegunt. *a* est testæ satis crassæ portiuncula, qua portio hæc orthoceratitis vestita adhuc est.

